

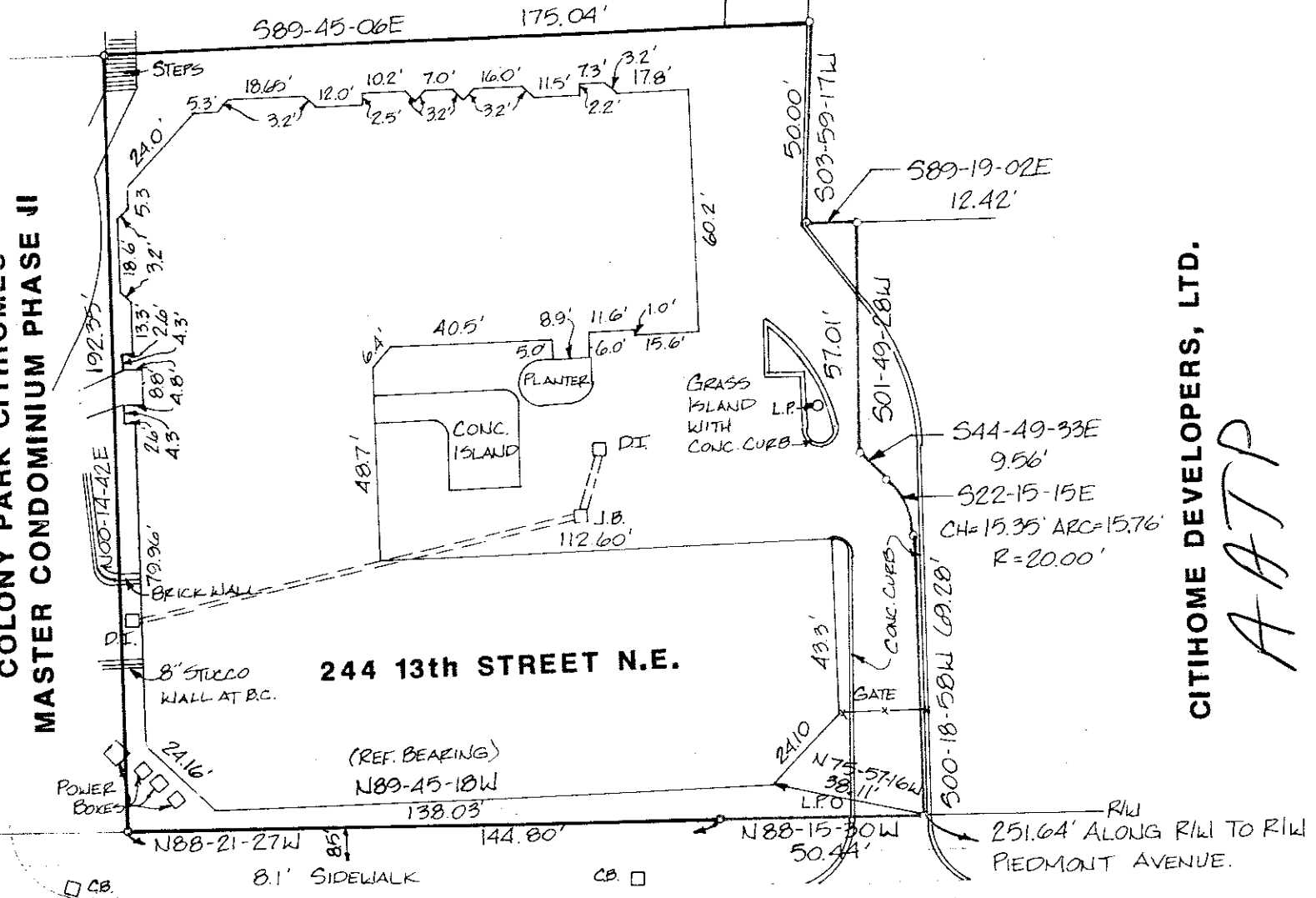
**COLONY PARK CITHOME I CONDOMINIUM**

**253 14th STREET N.E.**

**COLONY PARK CITHOME I  
MASTER CONDOMINIUM PHASE II**

**CITHOME DEVELOPERS, LTD.**

*AATP*



**STREET N.E.**

**25.3' PVM'T.**

7.4' SIDEWALK

*13TH STREET*

In my opinion this plat is a correct representation of the land platted and has been prepared in conformity with the requirements of